

Procedure for replacing LED strips

1. **Turn off the power** by switching off the circuit breaker.
2. **Remove the end caps** (END CAP) on each side.



3. **Carefully remove the lens.**
4. **Peel off the tape** using a flathead screwdriver. **Do not remove** the black double-sided adhesive tape at the bottom of the fixture.

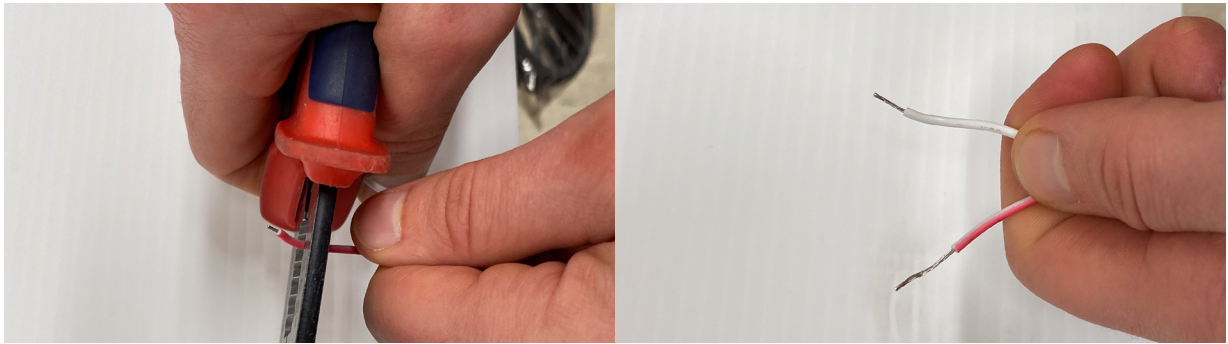


5. Once the tape is removed from the structure, **cut the wires as close as possible to the tape** using scissors.



Procedure for replacing LED strips

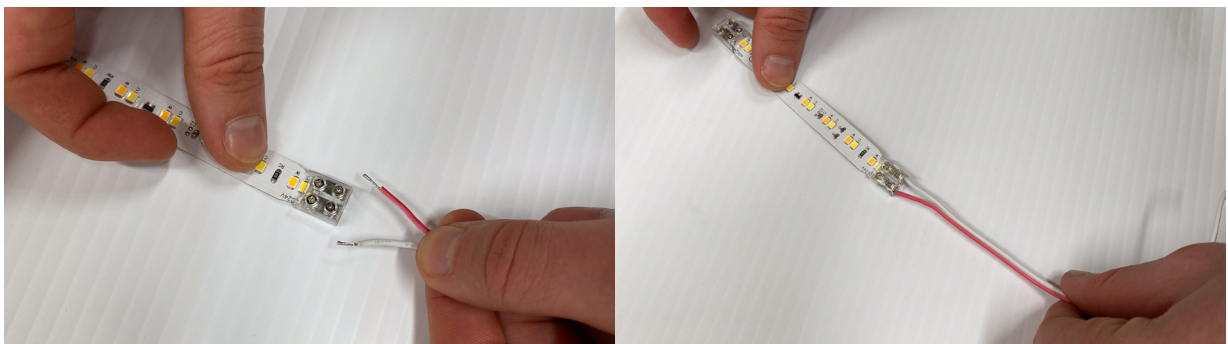
6. Once the wires are cut and the tape is removed, **strip them** using a wire stripper, scissors, or a knife to expose about **1/8"** of **bare wire**.



7. **Prepare the new tape.** Do not install it at the bottom of the fixture yet. **First, insert the wires into the connector,** ensuring correct polarity:

- **Red wire -> Positive side (+)**
- **White wire -> Negative side (-)**

(These markings are indicated on the tape near the copper plates.)

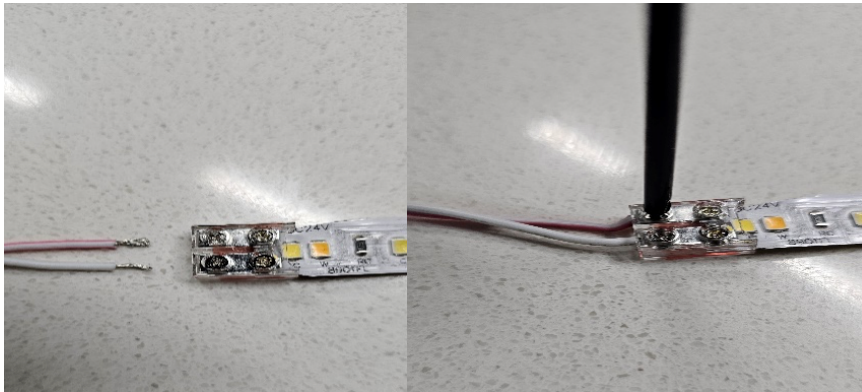


Procedure for replacing LED strips

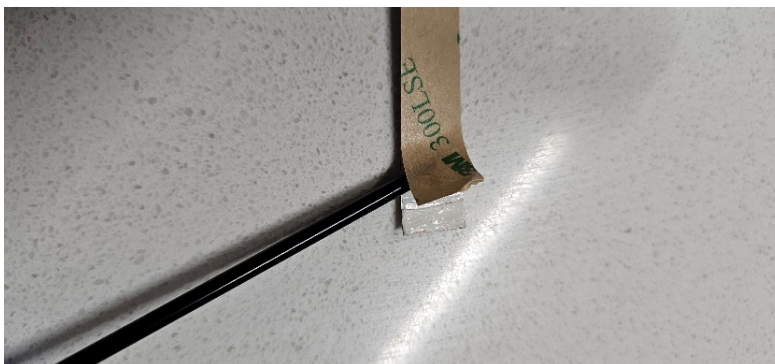
8. Using a **Phillips screwdriver**, correctly insert the wires into the connector:

- The **red wire** into the **positive (+) terminal**
- The **white wire** into the **negative (-) terminal**

Ensure the wires are fully inserted and tighten the screw. They must be securely fastened. *(If the wires are not properly stripped or inserted, the current will not flow, and the fixture will not light up.)*



9. **Carefully remove the protective backing** from the tape and the connector using a flathead screwdriver or scissors.



Procedure for replacing LED strips

10. **Stick the tape onto the black double-sided adhesive strip** at the bottom of the fixture.

- Start sticking it from the screwed connector.
- Apply the tape gently, following the black adhesive strip.
- Once positioned correctly, press lightly to ensure proper adhesion.

11. **Before reinstalling the lens, test the fixture:**

- Restore power by switching on the circuit breaker.
- Turn on the wall switch.
- If the light does not turn on, check:
 - That the red wire is correctly connected to the positive (+) terminal and the white wire to the negative (-) terminal.
 - That the wires are fully inserted and properly stripped.

12. **Install the lens** (preferably with two people):

- Start at one end of the light fixture.
- Insert one side at a time into the extrusion.
- Once in place, **gently press** to secure it inside the extrusion.

13. **Reinstall the end caps** (END CAP) on each side.

That's it!